

CATALINA AT LAKE WORTH P.U.D.

BEING A REPLAT OF A PORTION OF TRACTS 2, 15, 17, 18, 31 AND 32, BLOCK 28, PALM BEACH FARMS COMPANY PLAT NO. 3, AS RECORDED IN PLAT BOOK 2, PAGES 45 THROUGH 54, TOGETHER WITH THAT ABANDONED 30 FOOT WIDE RIGHT-OF-WAY LYING BETWEEN SAID TRACTS 15 AND 18, BLOCK 28, AS RECORDED IN OFFICIAL RECORDS BOOK 30727, PAGE 223, ALL OF THE PUBLIC RECORDS OF PALM BEACH COUNTY, FLORIDA, LYING IN SECTION 29, TOWNSHIP 44 SOUTH, RANGE 42 EAST, PALM BEACH COUNTY, FLORIDA.

SHEET 2

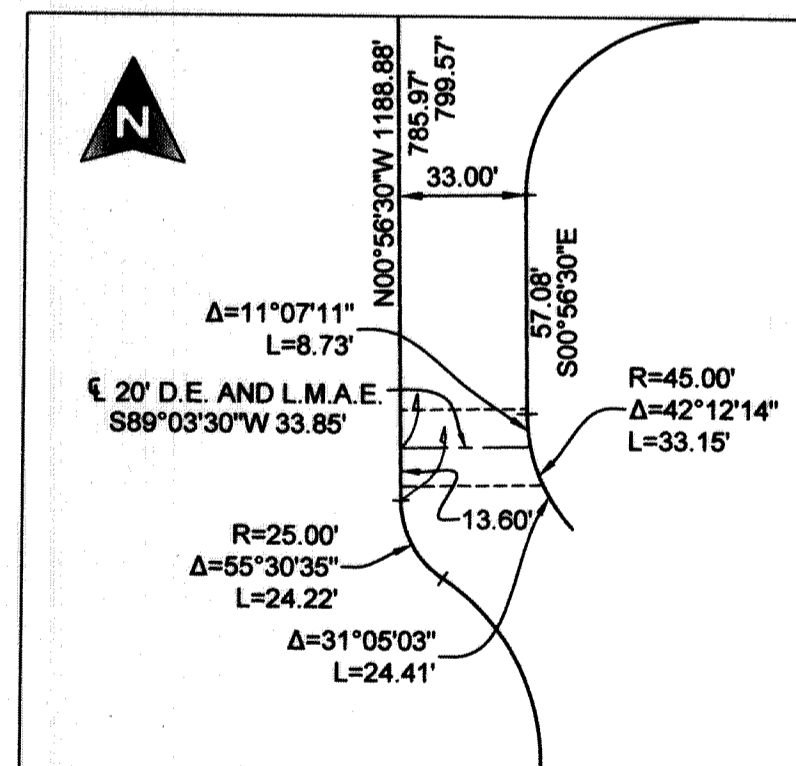
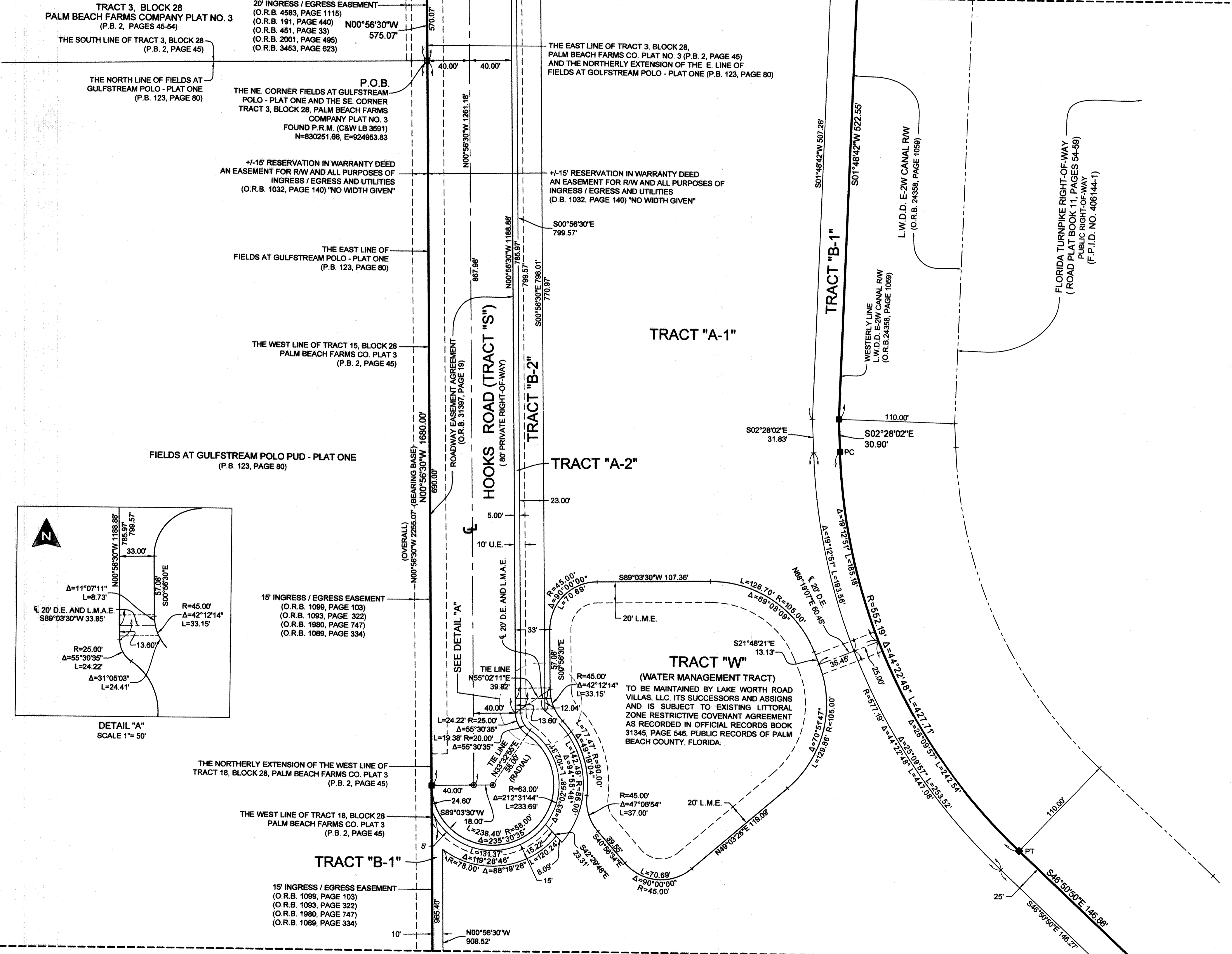
SHEET 3

SHEET 4

KEY MAP
NOT TO SCALE

149

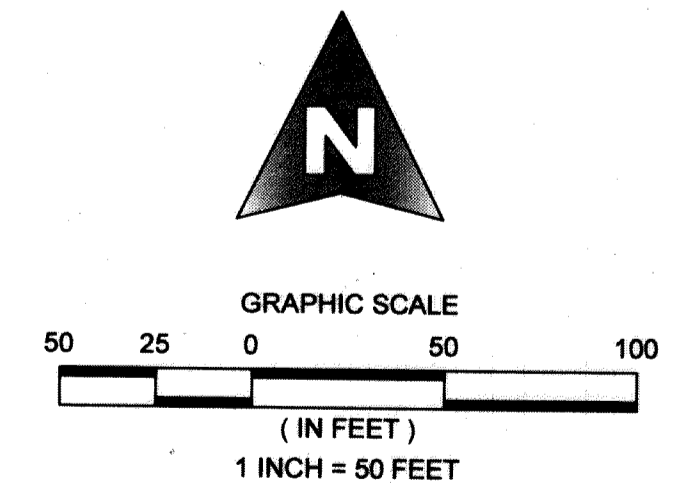
MATCH LINE - SEE SHEET 2



COORDINATE NOTES:

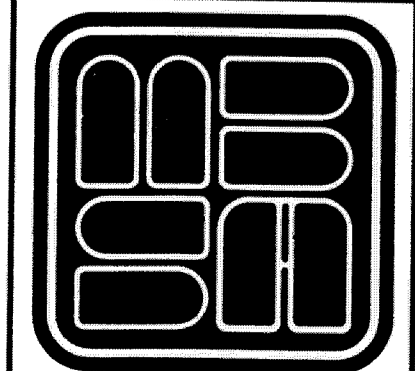
STATE PLANE COORDINATES SHOWN ARE GRID
 DATUM = NAD 83, 1990 ADJUSTMENT
 ZONE = FLORIDA EAST ZONE
 LINEAR UNITS = US SURVEY FOOT
 COORDINATE SYSTEM 1983 STATE PLANE TRANSVERSE MERCATOR PROJECTION
 ALL DISTANCES ARE GROUND
 PROJECT SCALE FACTOR = 1.0000236
 GROUND DISTANCE X SCALE FACTOR = GRID DISTANCE
 BEARINGS AS SHOWN HEREON ARE GRID DATUM, NAD 83 1990 ADJUSTMENT, FLORIDA EAST ZONE.

- LEGEND**
- P.O.C. = POINT OF COMMENCEMENT
 - P.O.B. = POINT OF BEGINNING
 - P.R.M. = PERMANENT REFERENCE MONUMENT
 - P.C.P. = PERMANENT CONTROL POINT
 - O.R.B. = OFFICIAL RECORD BOOK
 - P.B. = PLAT BOOK
 - D.B. = DEED BOOK
 - P.B.C. = PALM BEACH COUNTY
 - R.W. = RIGHT OF WAY
 - CL = CENTERLINE
 - U.E. = UTILITY EASEMENT
 - D.E. = DRAINAGE EASEMENT
 - R. = RADIUS
 - L. = ARC LENGTH
 - Δ = CURVE CENTRAL ANGLE
 - \odot = DENOTES FOUND PALM BEACH COUNTY DISK IN CONCRETE
 - \oplus = SET NAIL AND ALUMINUM DISK, STAMPED P.C.P. L.B. 2438
 - \blacksquare = SET 4"x4"x24" C.M. WITH ALUMINUM DISK, STAMPED P.R.M. L.B. 2438
 - \square = DENOTES FOUND P.R.M. (AS SHOWN)
 - N. = NORTHING, WHEN USED WITH COORDINATES
 - E. = EASTING, WHEN USED WITH COORDINATES
 - L.A.E. = LIMITED ACCESS EASEMENT
 - L.S.E. = LIFT STATION EASEMENT
 - L.M.E. = LAKE MAINTENANCE EASEMENT
 - L.M.A.E. = LAKE MAINTENANCE ACCESS EASEMENT
 - C.M. = CONCRETE MONUMENT
 - NO. = NUMBER
 - P.B.C.U.E. = PALM BEACH COUNTY UTILITY EASEMENT
 - L.W.D.D. = LAKE WORTH DRAINAGE DISTRICT
 - F.D.O.T. = FLORIDA DEPARTMENT OF TRANSPORTATION
 - C.B. = CHORD BEARING
 - S.F. = SQUARE FEET
 - PC = POINT OF CURVATURE
 - PT = POINT OF TANGENCY
 - NT = POINT OF NON-TANGENCY
 - P.U.D. = PLANNED UNIT DEVELOPMENT
 - D. = DESCRIPTION
 - F.P.I.D. = FINANCIAL PROJECT IDENTIFICATION



MATCH LINE - SEE SHEET 4

SHEET 3 OF 4



MICHAEL B. SCHORAH & ASSOCIATES, INC.
 1850 FOREST HILL BLVD., SUITE 206
 WEST PALM BEACH, FLORIDA 33406
 EB# 2438 TEL. (561) 968-0080 FAX. (561) 642-9726 LB# 2438

CATALINA AT LAKE WORTH P.U.D.